



INSTALLATION INSTRUCTIONS

1075 North Ave. Sanger, CA 93657-3539 local: 559-875 0222 fax: 559-876-2259 toll free: 800-445-3767

5484

FRONT ANTI SWAY BAR

70-81 CAMERO, FIREBIRD 75-79 CHEVY NOVA, VENTURA, and PHOENIX

Congratulations! You were selective enough to choose a BELLTECH PRODUCT. We have spent many hours developing our line of products so that you will receive maximum performance with minimum difficulty during installation.

- Note:** Confirm that all of the hardware listed in the parts list is in the kit. Do not begin installation if any part is missing. Read the instructions thoroughly before beginning this installation.
- Warning:** **DO NOT** work under a vehicle supported by only a jack. Place support stands securely under the vehicle in the manufacturer's specified locations unless otherwise instructed.
- Warning:** **DO NOT** drive vehicle until all work has been completed and checked. Torque all hardware to values specified.
- Reminder:** Proper use of safety equipment and eye/face/hand protection is absolutely necessary when using these tools to perform procedures!
- Note:** It is very helpful to have an assistant available during installation.

RECOMMENDED TOOLS:

- Properly rated floor jack, support stands, and wheel chocks
- Combination wrench set
- Ratcheting socket wrench and socket set
- Safety Glasses

Note: It is very helpful to have an assistant available during installation.

SAFETY REMINDER: PROPER USE OF SAFETY EQUIPMENT AND EYE/FACE/HAND PROTECTION IS ABSOLUTELY NECESSARY WHEN USING THESE TOOLS TO PERFORM PROCEDURES!

KIT INSTALLATION

1. Open the hardware kit and remove all of the contents. Refer to the part list (Page 3) to verify that all parts are present.
2. Park the vehicle on a smooth, level concrete or seasoned asphalt surface and activate the parking brake. Block the FRONT wheels of the vehicle with appropriate wheel chocks; making sure the vehicle's transmission is in 1st gear (manual) or "Park" (automatic).
3. Using a properly rated floor jack, lift the REAR wheels of the vehicle off the ground. Place support stands, rated for the vehicle's weight, and in the factory specified locations. Refer to the vehicle Owner's Manual. Prior to lowering the vehicle onto the stands, make sure the supports will securely contact the chassis.
4. It is very important that the vehicle is properly supported during this installation to prevent personal injury and chassis damage! Make sure that the supports stands are properly placed prior to performing the following procedures. We **DO NOT RECOMMEND** using wheel ramps while performing this installation.

5. Slowly lower the vehicle onto the stands and, before placing the vehicle's entire weight on them, again check that they properly and securely contact the chassis as described above. Check for possible interference with any lines, wires, cables, or other easily damaged components.
6. On vehicle with original equipment Sway Bars locate the end links at the ends of the bars and disconnect from the control arm.
7. Locate and remove the bushing brackets from the center portion of the Anti-Sway Bar. Remove the original equipment Anti-Sway Bar if so equipped.
8. Thoroughly lubricate the **inside** of your new hyperthane bushing using a high grade lithium or silicone based grease with molybdenum disulfide. Place the lubricated bushing on your new Belltech Anti-Sway Bar. Refer to the original equipment Anti-Sway Bar for proper bushing location. On vehicles with out O.E. Sway Bars the bushings need to be placed on the bar near the outer-most bends of the bar. There are 2 holes in the chassis on the left and right side of the chassis.

WD-40™ is recommended to help remove excess lubricant.

9. Position your new Anti-Sway Bar in the factory location and fasten the center portion using the brackets and bolts provided in kit. The bar must be spaced away from the car by using 2 flat plates under each bushing. See illustration.
10. With the center portion properly fastened, connect the ends of the Anti-Sway Bar to the control arms as shown in the diagram. Tighten the end links until the grommets bulge slightly, but do not crush grommets.
11. Check that all components and fasteners have been properly installed, tightened and torqued.
12. Check brake hoses, and other components for any possible interference.
13. Lift vehicle and remove support stands. Carefully lower vehicle to ground.
14. Immediately test-drive the vehicle in a remote location so that you can become accustomed to the revised driving characteristics and handling. Be aware that the vehicle will handle substantially different now that it has been modified.
15. Installation is complete. Check all of the hardware and re-torque at intervals for the first 10, 100, 1000 miles.

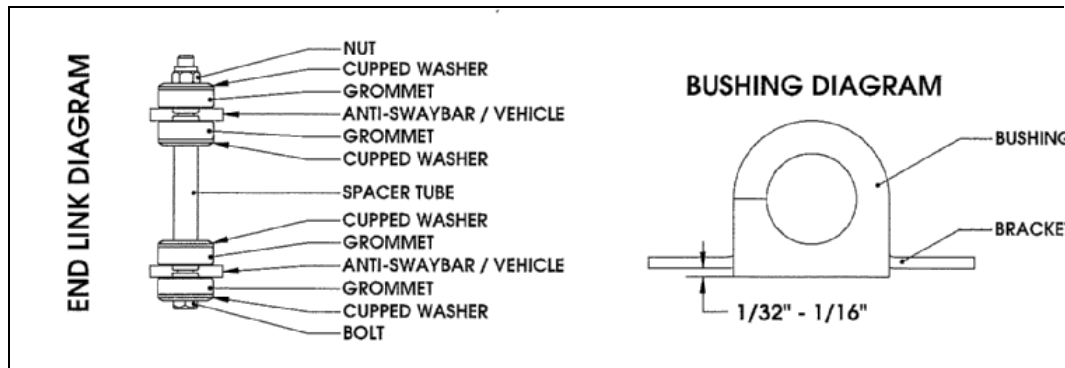
PART LIST FOR 5484 FRONT ANTI-SWAY BAR KIT

Part No.	Description	Qty.
50250-300	Front ASB	1
110255	3/8"-16 Ny Lock Nut	2
112140	3/8"-16 x 7" HHCS	2
112502	Cupped Washer	8
113000	End Link Grommet	8
112424	2-3/4" x 3/8" Spacer	2
113060	Pivot Bushing 1-1/4"	2
114022	Bushing Bracket	2
114038	Under Support Plate	4
112098	3/8"-16 x 1-1/2" HHCS	4
112518	USS Flat Washer	4
112078	5/16"-18 x 1-1/4" HHCS	4
112024	10mm – 1.5 x 30mm SHCS	4
55000-10	Grease Pack	1

! BELLTECH INSTALLATION TIPS

LUBRICATION

Pre-lubricating the inside of the bushing before it's installed is important because the lubrication will greatly reduce noise and it will increase bushing life. Belltech recommends you use Molybdenum disulfide. This will help protect the inside surface of the bushing and will last longer than most types of grease. Thoroughly lubricate the inside of the bushing with this grease.



BUSHING INSTALLATION

Make sure an amount of $1/32''$ to $1/16''$ of the bushing is showing when you install it onto the bracket. See the diagram above. If the bushing is showing more than $1/16''$ than use a sander or a sheet of coarse grit sand paper to shave it down to the proper height. In most applications when installing the new bushings on your Belltech Anti-Sway Bar (ASB) you may refer to your original equipment Anti-Sway Bar to locate the proper location.

END LINK INSTALLATION

It is not required that you use lubricant on the end links since there is no rotational movement. The Belltech end links are comprised of grommets, cupped washers, a spacer tube, bolt, and lock nut, these assembled components create the end link. See END LINK DIAGRAM above.